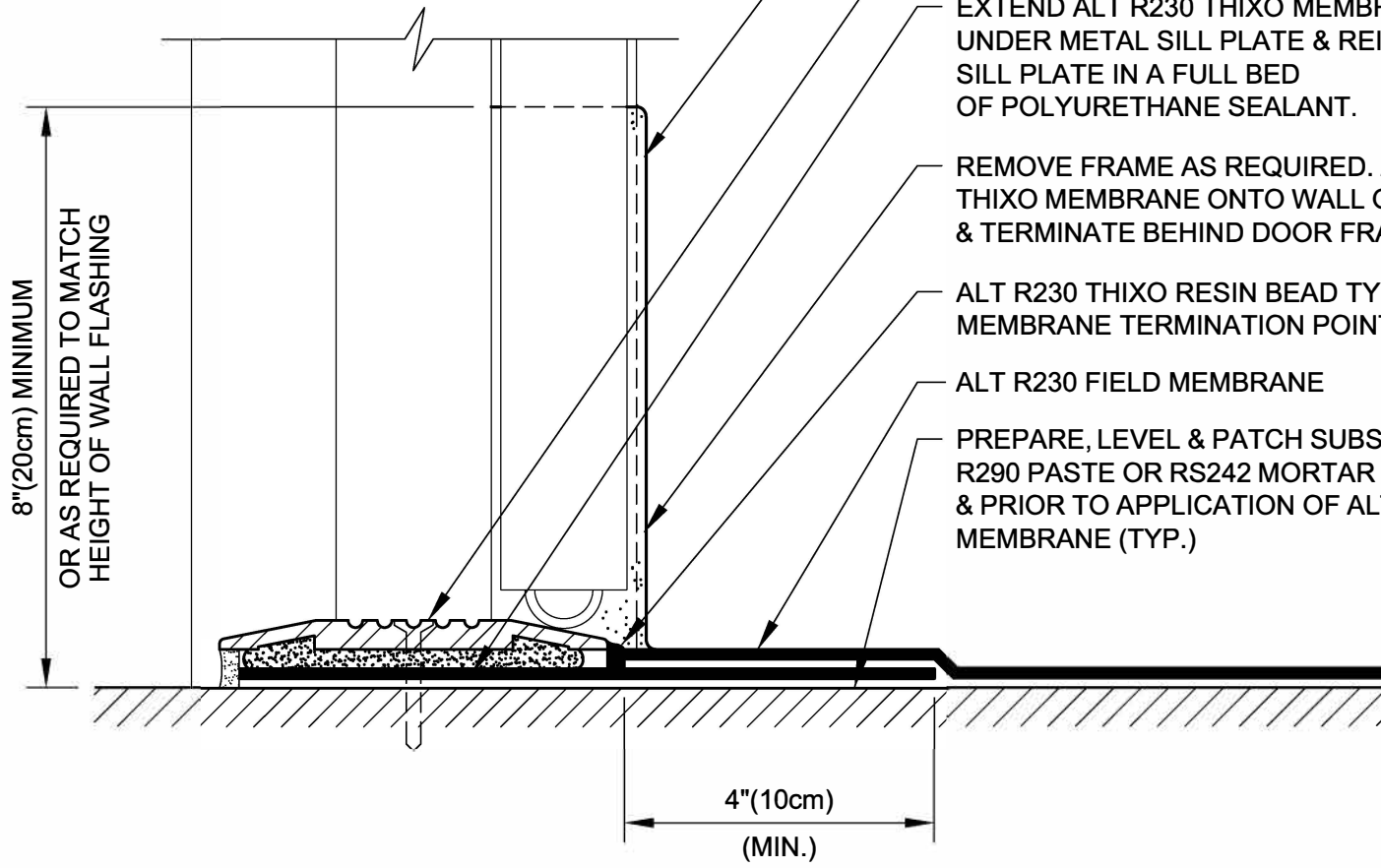


FRONT VIEW



APPLY APPROVED SEALANT BETWEEN DOOR FRAME & ALT R230 THIXO MEMBRANE AS REQUIRED (BY OTHERS)

METAL SILL FLASHING SET IN BED OF SEALANT (BY OTHERS)

EXTEND ALT R230 THIXO MEMBRANE FLASHING UNDER METAL SILL PLATE & REINSTALL METAL SILL PLATE IN A FULL BED OF POLYURETHANE SEALANT.

REMOVE FRAME AS REQUIRED. APPLY ALT R230 THIXO MEMBRANE ONTO WALL OPENING JAMBS & TERMINATE BEHIND DOOR FRAME.

ALT R230 THIXO RESIN BEAD TYPICAL @ ALL MEMBRANE TERMINATION POINTS.

ALT R230 FIELD MEMBRANE

PREPARE, LEVEL & PATCH SUBSTRATE W/AL T R290 PASTE OR RS242 MORTAR AFTER PRIMING & PRIOR TO APPLICATION OF ALT R230 MEMBRANE (TYP.)

8"(20cm) MINIMUM
OR AS REQUIRED TO MATCH
HEIGHT OF WALL FLASHING

4"(10cm)
(MIN.)

DRAWING NO.:

M-2D

AM_02D

FLUSH DOOR SILL FLASHING

| | | | | | | | |
|----------|---|------------|------------|-------|--------|----------|------------|
| REVISION | 0 | ISSUE DATE | 10-15-2014 | SCALE | N.T.S. | DRAWN BY | ALT Global |
|----------|---|------------|------------|-------|--------|----------|------------|



ALT