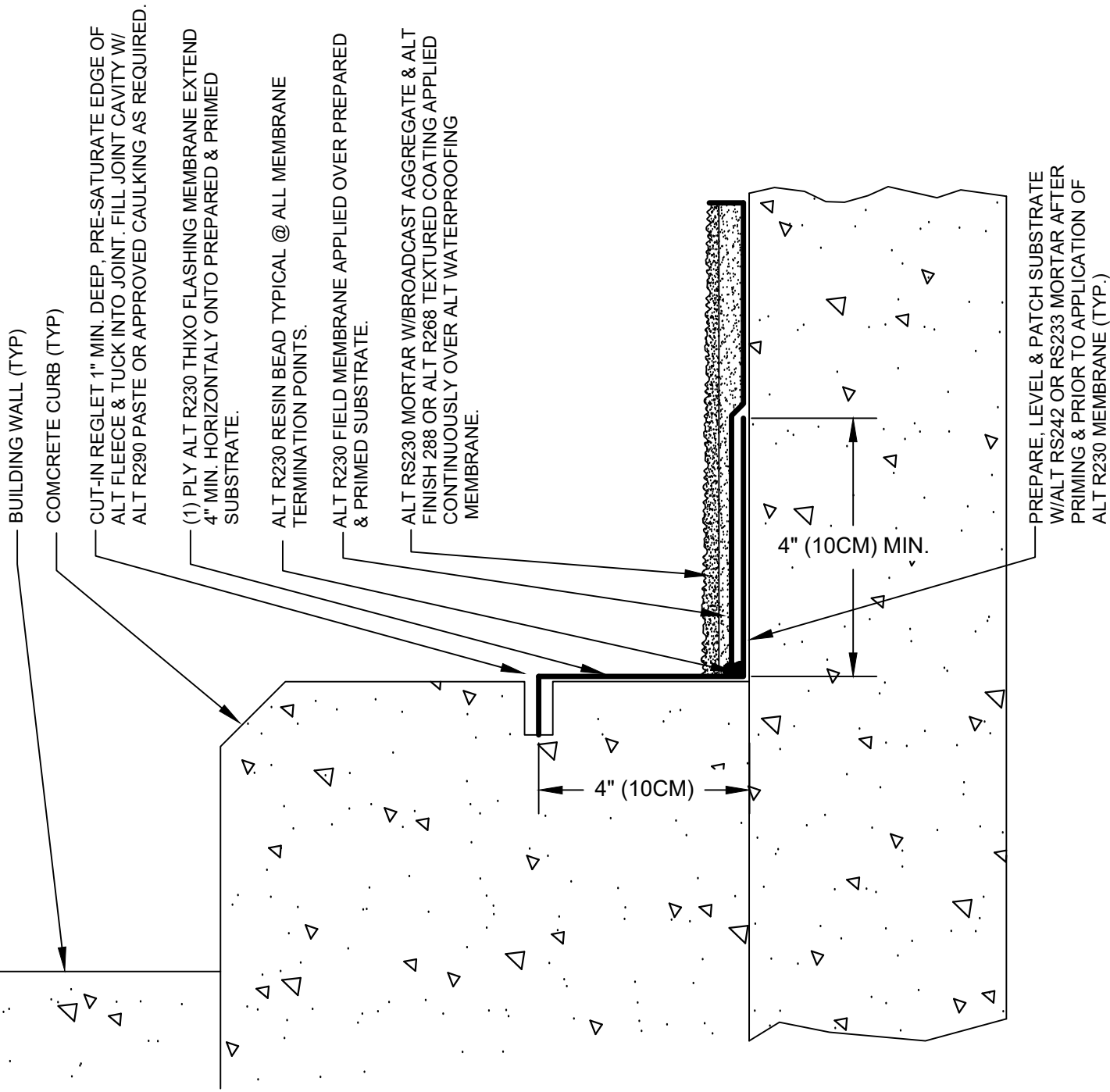


NOTE:
 ALT R230 THIXO FLASHING APPLIED NO CURB IS SUBJECT TO MECHANICAL DAMAGE FROM VEHICLES & SHOULD BE PROTECTED USING BOLLARDS, STAND-OFFS & STEEL SKID PLATE OR OTHER MEANS AS NECESSARY.



BUILDING WALL (TYP)

COMCRETE CURB (TYP)

CUT-IN REGLET 1" MIN. DEEP, PRE-SATURATE EDGE OF ALT FLEECE & TUCK INTO JOINT. FILL JOINT CAVITY W/ ALT R290 PASTE OR APPROVED CAULKING AS REQUIRED.

(1) PLY ALT R230 THIXO FLASHING MEMBRANE EXTEND 4" MIN. HORIZONTALLY ONTO PREPARED & PRIMED SUBSTRATE.

ALT R230 RESIN BEAD TYPICAL @ ALL MEMBRANE TERMINATION POINTS.

ALT R230 FIELD MEMBRANE APPLIED OVER PREPARED & PRIMED SUBSTRATE.

ALT RS230 MORTAR W/BROADCAST AGGREGATE & ALT FINISH 288 OR ALT R268 TEXTURED COATING APPLIED CONTINUOUSLY OVER ALT WATERPROOFING MEMBRANE.

4" (10CM)

4" (10CM) MIN.

PREPARE, LEVEL & PATCH SUBSTRATE W/ALT RS242 OR RS233 MORTAR AFTER PRIMING & PRIOR TO APPLICATION OF ALT R230 MEMBRANE (TYP.)



INTERIOR CURB FLASHING (TYPICAL)

DRAWING NO.:

TR-C1

REVISION	ISSUE DATE	SCALE	DRAWN BY
0	03/23/17	N.T.S.	M.S.

TR_C01