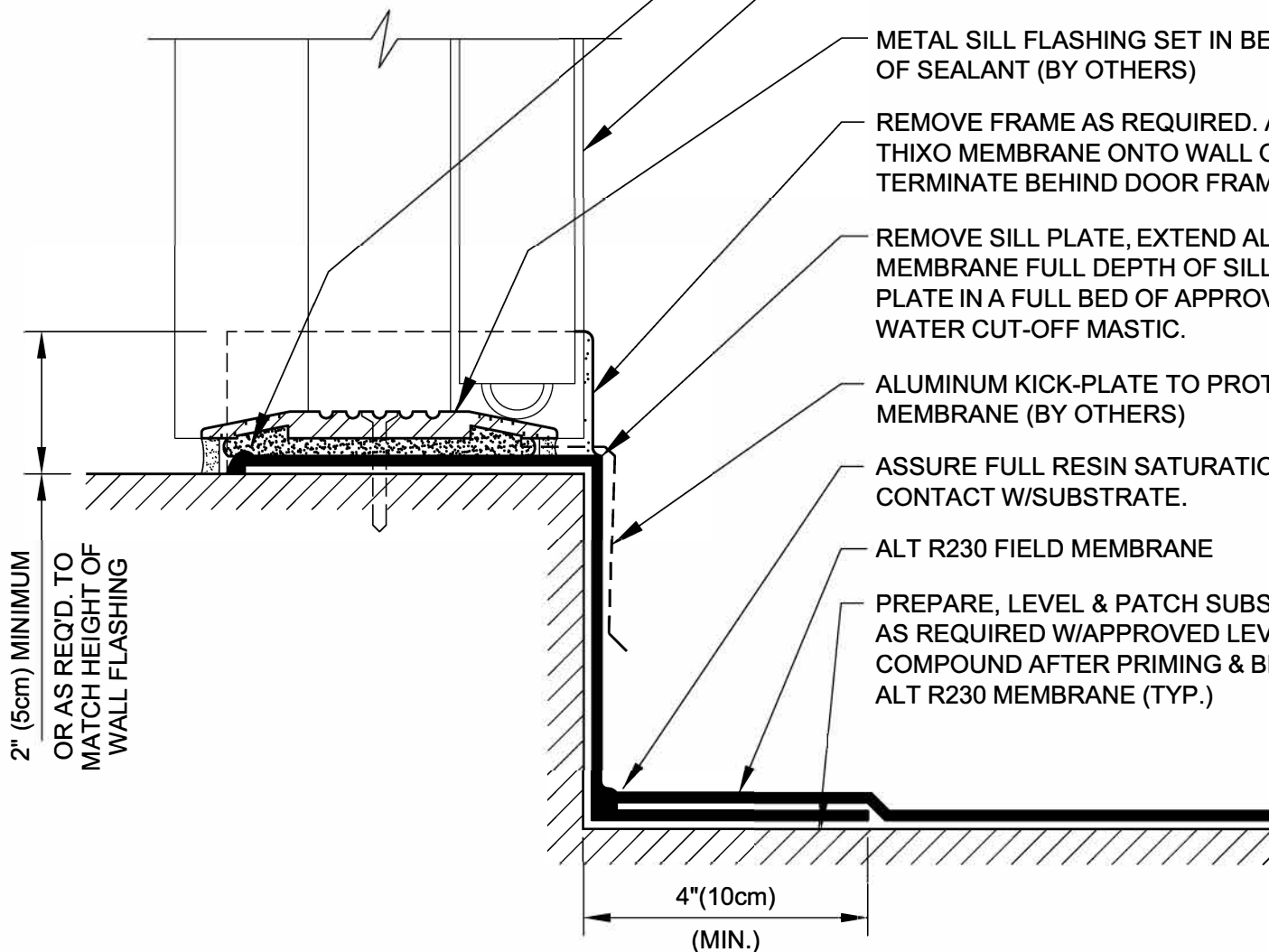


FRONT VIEW



2" (5cm) MINIMUM
OR AS REQD. TO
MATCH HEIGHT OF
WALL FLASHING

4" (10cm)
(MIN.)

- ALT R230 RESIN BEAD TYPICAL @ ALL MEMBRANE TERMINATION POINTS.
- APPLY APPROVED SEALANT BETWEEN DOOR FRAME & ALT R230 THIXO MEMBRANE AS REQUIRED (BY OTHERS)
- METAL SILL FLASHING SET IN BED OF SEALANT (BY OTHERS)
- REMOVE FRAME AS REQUIRED. APPLY ALT R230 THIXO MEMBRANE ONTO WALL OPENING JAMBS & TERMINATE BEHIND DOOR FRAME.
- REMOVE SILL PLATE, EXTEND ALT R230 THIXO MEMBRANE FULL DEPTH OF SILL & RESET SILL PLATE IN A FULL BED OF APPROVED SEALANT OR WATER CUT-OFF MASTIC.
- ALUMINUM KICK-PLATE TO PROTECT EDGE OF MEMBRANE (BY OTHERS)
- ASSURE FULL RESIN SATURATION OF FLEECE & CONTACT W/SUBSTRATE.
- ALT R230 FIELD MEMBRANE
- PREPARE, LEVEL & PATCH SUBSTRATE AS REQUIRED W/APPROVED LEVELING COMPOUND AFTER PRIMING & BEFORE APPLYING ALT R230 MEMBRANE (TYP.)

DRAWING NO.:

M-2C
AM_02C

TYPICAL DOOR SILL FLASHING

| | | | | | | | |
|----------|---|------------|------------|-------|--------|----------|------------|
| REVISION | 0 | ISSUE DATE | 10-15-2014 | SCALE | N.T.S. | DRAWN BY | ALT Global |
|----------|---|------------|------------|-------|--------|----------|------------|



ALT