

NOTE:

1. SIZE WIDTH OF DE-BONDING TAPE TO PROVIDE UN-ADHERED AREA MINIMUM 5 TIMES LARGER THAN THE MAXIMUM ANTICIPATED EXPANSION. MEMBRANE COVER STRIP MUST EXTEND PAST DE-BONDING AS INDICATED BELOW (TYP.)
2. DO NOT APPLY ALT PRIMER AT VERTICAL SURFACES OF PREPARED RECESS.
3. INSTALL NEW JOINT SYSTEM DURING MEDIAN TEMPERATURES TO AVOID RAISED LOOP WHEN DECK EXPANDS DURING HIGH TEMPERATURES.

DO NOT APPLY ALT MORTAR, TRAFFIC SURFACING OR FINISH OVER BOND BREAKER (TYP.)

EXPANSION GAP AS REQUIRED.

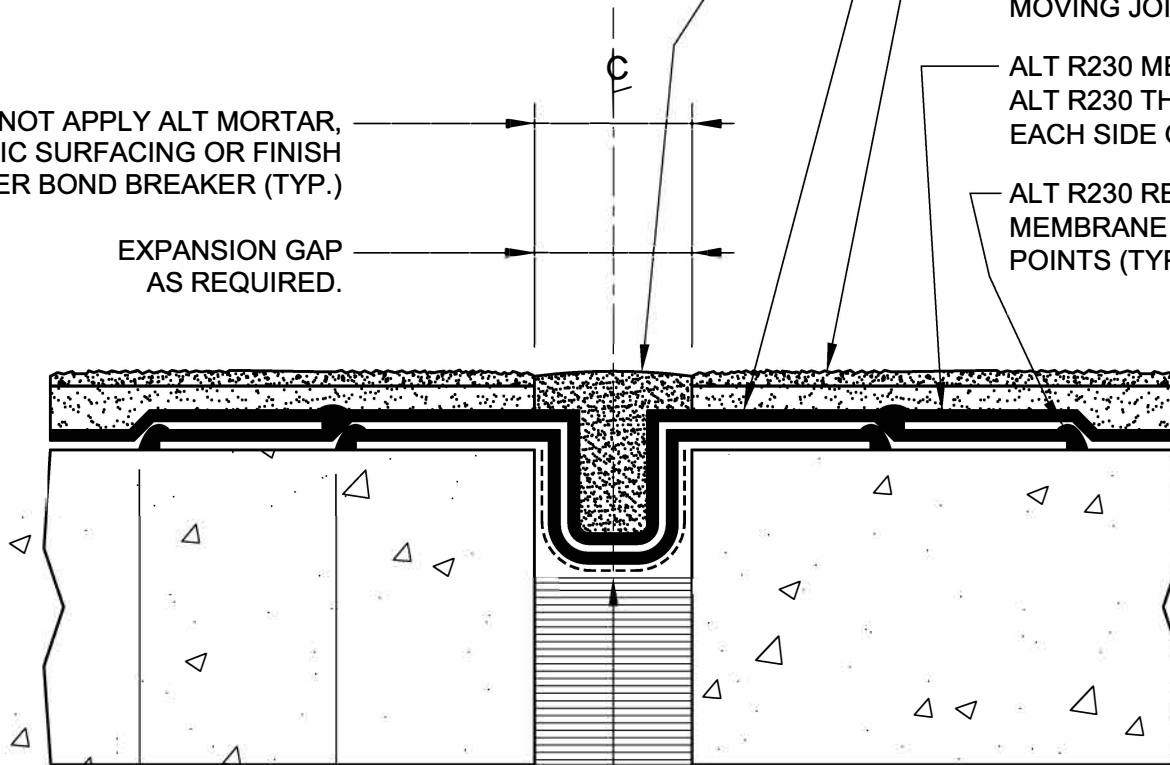
ACCEPTABLE JOINT FILLER AS REQUIRED (BY OTHERS)

2-PLY ALT R230 THIXO MEMBRANE FLASHING STRIP APPLIED OVER DE-BONDING TAPE & CENTERED OVER JOINT IN CONCRETE (TYP.)

ACCEPTABLE ALT TRAFFIC SURFACING SYSTEM STOPPED EACH-SIDE OF MOVING JOINT AS SHOWN (TYP.)

ALT R230 MEMBRANE FIELD. TIE-IN INTO ALT R230 THIXO MEMBRANE FLASHING EACH SIDE OF JOINT (TYP.)

ALT R230 RESIN BEAD TYPICAL @ ALL MEMBRANE TERMINATION POINTS (TYP.)



3" MIN.
(TYP.)

3" MIN.
(TYP.)

PREFORMED COMPRESSIBLE FILLER OR BACKER ROD SIZED FOR OPENING.

DE-BONDING TAPE SIZED TO ACCOMMODATE MOVEMENT & CENTERED IN CONC. JOINT.

DRAWING NO.:

TR-J5

TR_J05

TRAFFIC EXPANSION JOINT FLASHING

REVISION

0

ISSUE DATE

10-15-2014

SCALE

N.T.S.

DRAWN BY

D.R.W.



ALT