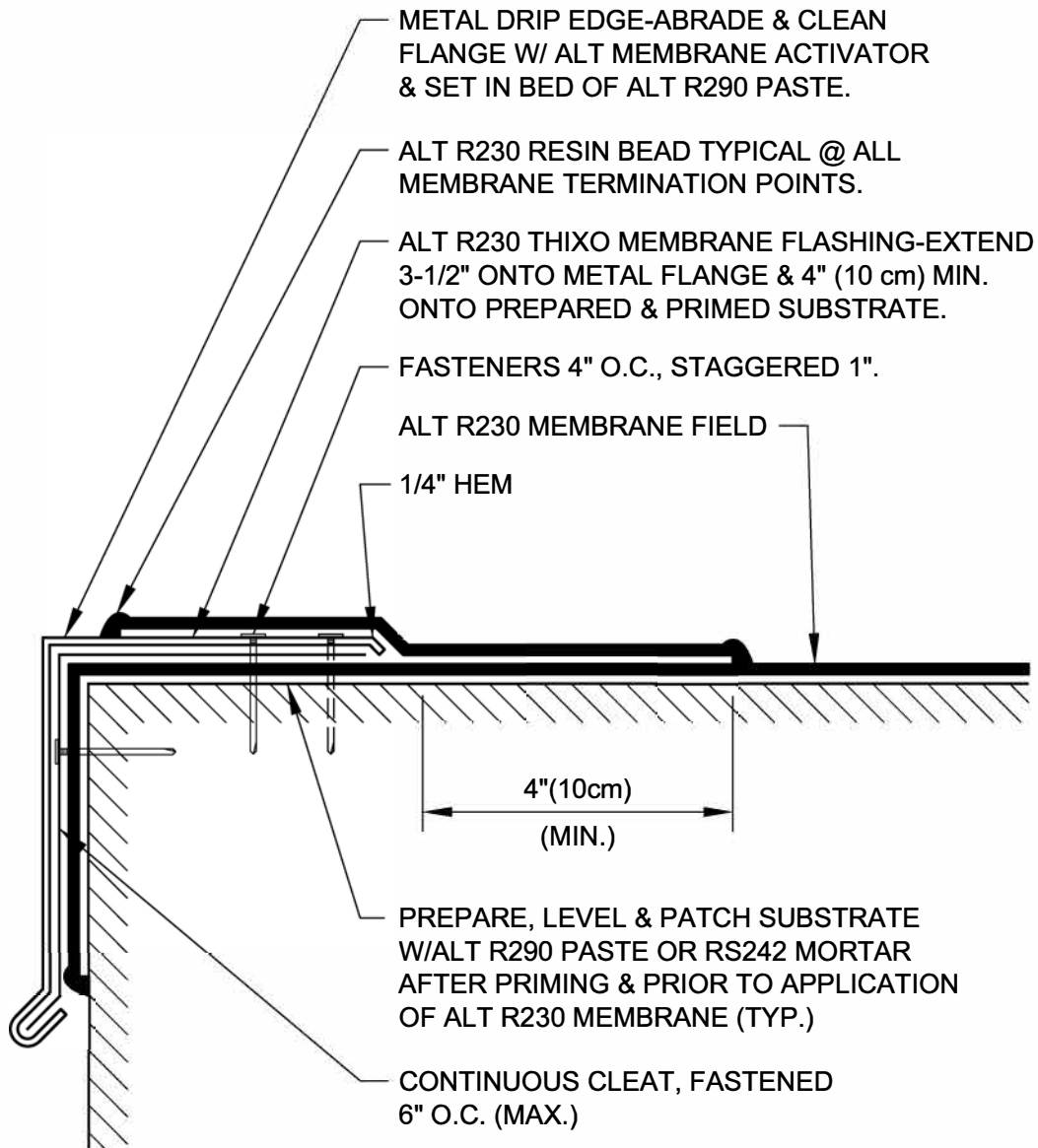


NOTE:
 APPLY DE-BONDING TAPE & MEMBRANE
 EXPANSION STRIPS AT ALL JOINTS IN
 METAL-SEE TYPICAL DETAIL. MEMBRANE
 EXPANSION STRIPS MUST EXTEND THE
 FULL PROFILE & EXPOSED FACE OF
 METAL FLASHING.



METAL DRIP EDGE DETAIL

DRAWING NO.:

E-1B

REVISION
 0

ISSUE DATE
 10-15-2014

SCALE
 N.T.S.

DRAWN BY
 ALT Global

AE_01B